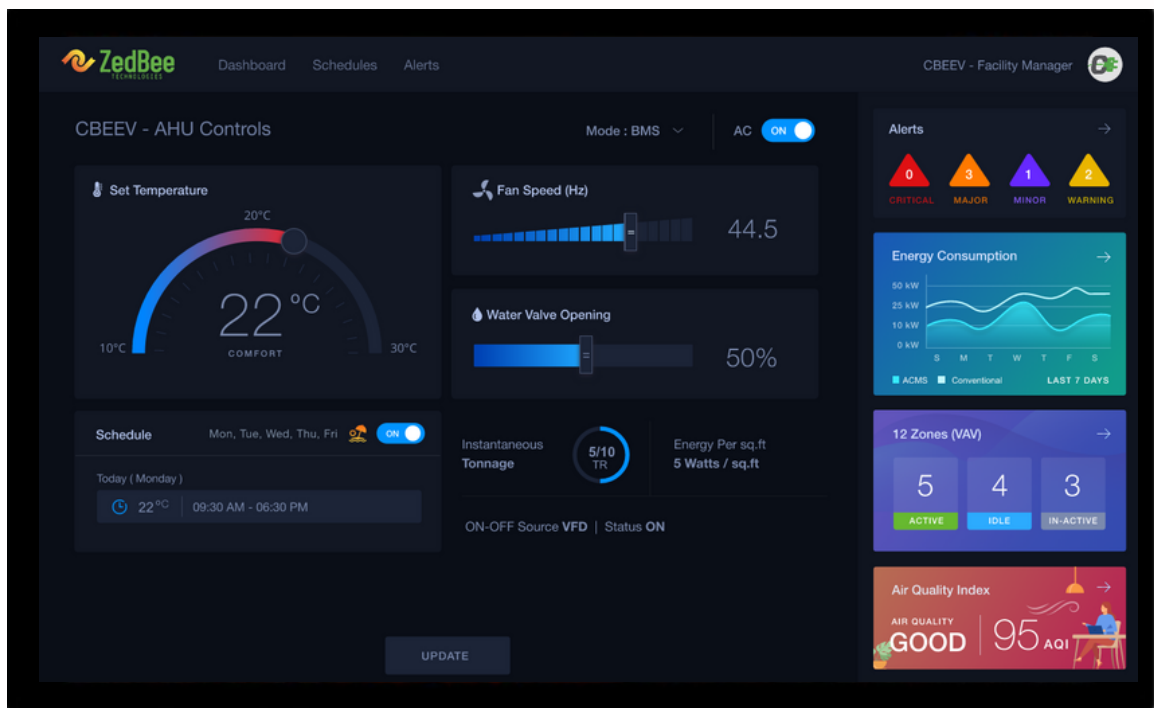

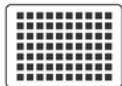

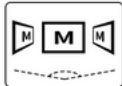



ZEDBEE HMI

DATA SHEET



MODEL NUMBER : ZBSHMI-1011-CT

Size	Resolution	Display Interface	Viewing Angle	Touch Type
 10.1"	 1280x800	 HDMI	 178°	 Capacitive

IPS DISPLAY PANEL AND TOUCH

- Touch Type: Capacitive Touch
- Touch Panel: Toughened Glass Optical bonding
- Display Size: 10.1-inch (217.18x135.96mm)
- Display Resolution 1280×800
- Viewing angle: 178°

PROCESSOR SPECIFICATION

- Quad-core ARM Cortex A53 64-Bit SoC CPU
- 1GB DDR3 RAM
- 16GB Flash
- 10/100Mbps Ethernet
- 2 USB2.0 Host port
- WiFi 802.11 b/g/n with Bluetooth 4.0 (optional)

ELECTRICAL AND ENVIRONMENTAL DATE

- Power consumption: 20W Max
- Operating Temperature Range: 0-50 °C
- Operating Humidity: 10-90%
- Maximum Altitude: 2000 M

ENCLOSURE

- Body: MS powder coated
- IP Rating: IP 3X
- Mounting Type: To be mounted inside the electrical Panel

APPROVALS

- 1- For Controller
 - EN 55022:2010/AC:2011
 - EN 55024:2010
 - EN 61000-3-2:2014
 - EN 61000-3-3:2013
- 2- CE marking (applied under review)